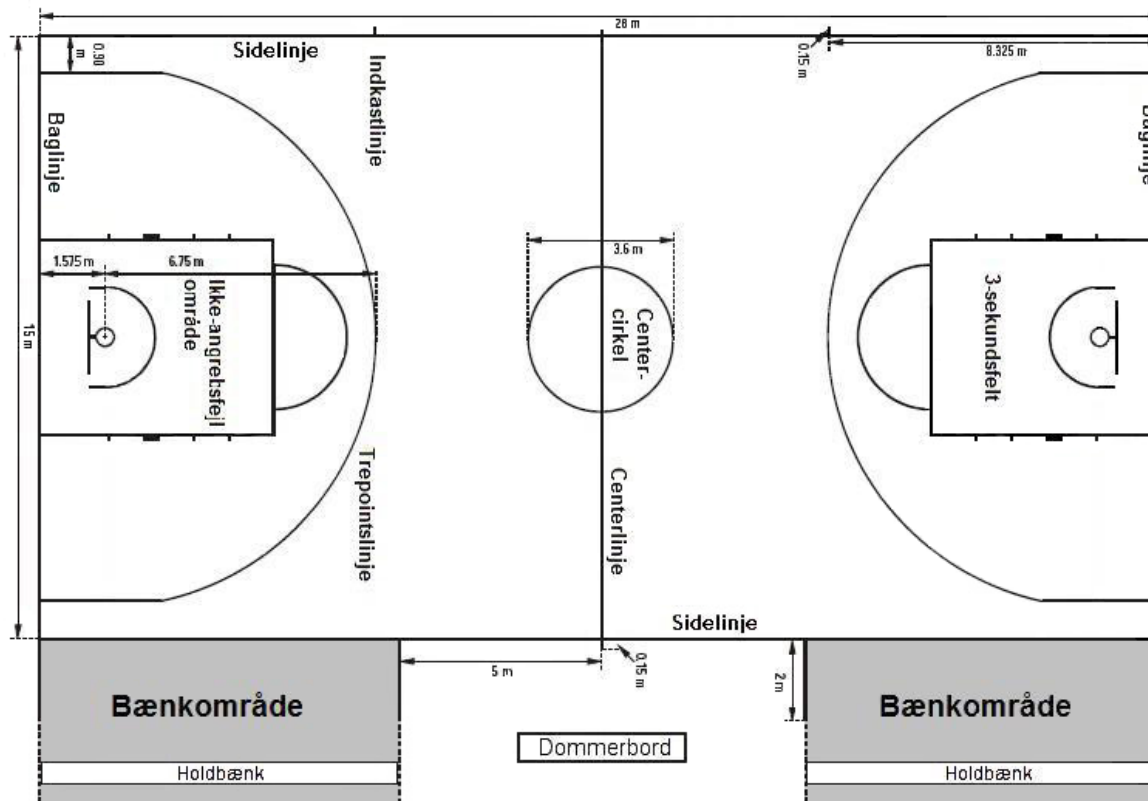


New rules



The court (2):



DU Nyt



New rules



Legal equipment (4):

- Compression sleeves of same dominant colour as the shirts
- Compression stockings of dominant colour as the shorts. Must end above or below the knee
- Non-coloured transparent mouth guard
- Non-coloured transparent taping of arms, shoulders, legs, etc
- Socks must be of same dominant colour for all players of the team



New rules



Start of a period, ball becomes live (8, 9, 10):

- First period starts when the ball leaves the hands of the referee on the jump ball
- Other periods start when the ball is at disposal of the player taking the throw-in
- The ball becomes live when the period starts



New rules



End of period (16):

- The game clock must indicate 0:00.3 (3/10 sec) or more for a player to gain control of the ball on a throw-in or on a rebound after last free throw in order to attempt a shot for a field goal
- Does not apply to taps or direct dunks



New rules



Throw-in line (17)):

- During last 2 min of 4. period, following the time-out granted to the team that has been entitled to possession of the ball from its backcourt, the throw-in will be taken from the new throw-in line in frontcourt



New rules



8 sec and back court rules (28 and 30)

- An offensive player must have both feet in the frontcourt when the ball touches him in order that the ball is considered to be in the front court
- For a player dribbling the ball must touch the frontcourt and the dribbler must have both feet in the frontcourt in order that the ball is considered to be in the front court



New rules



8 sec and back court rules (continued)

- No change for defensive players



New rules



Start of 8 and 24 seconds (28 and 50)

- On a throw-in the 8 and 24 sec counts start when the ball touches or is touched by any player on the court.
- Thus game clock and 24-second clock start simultaneously



New rules



24 seconds (29 and 50)

- If a throw-in is to be administered in the backcourt the 24 second clock shall be reset to 24 seconds – NO CHANGE
- If a throw-in is to be administered in the frontcourt the 24 second clock shall be reset as follows:
 - If 14 seconds or more are displayed on the 24 second clock, it shall not be reset
 - If 13 seconds or less are displayed on the 24 second clock, it shall be reset to 14 seconds



New rules



No charge area (33)

- No offensive foul (charge) shall be called when
 - the offensive player has control of the ball whilst airborne
 - he penetrates into the no-charge area
 - he attempts a shot or passes off
 - the defensive player has established a legal guarding position inside the no-charge area
- Does not apply if the offensive player is illegally using his hands, arms legs or body
- Does not apply if the offensive comes from behind the backboard
- Does not apply during rebound situations



New rules



Unsportsmanlike fouls (36)

- Unsportsmanlike fouls shall be given automatically if a defensive player commits a foul while the ball is out-of-bounds for a throw-in and the before the ball is released by the thrower-in.
- According to the new interpretation this shall be applied only in the last 2 minutes of 4. period/extra period



New rules



Technical fouls during free throw (31 and 38)

- During the last or only free throw, if a defensive player commits a violation a technical foul shall be given only in case of goaltending
- Not anymore for interference.



Guideline for referees



Use of hands:

- One hand not holding or pushing -> OK
- Two hands -> Foul
- Permanent touching not OK

Unsportsmanlike fouls:

- Hard fouls
- Defender does not try to play the ball

No-charge area

- Any doubt if defender is in or outside -> No call

Time-out

- After the second attempt to get the players onto the court, the referee must charge a time-out to the team

